

NAVIGATION LIGHTS DHR70

NAVIGATION LIGHTS DHR70 FOR SEAGOING VESSELS OF 50 METERS OR MORE IN LENGTH ACCORDING TO AND COMPLYING WITH INTERNATIONAL REGULATIONS FOR PREVENTING COLLISIONS AT SEA (COLREG-IMCO 1972)

Body - Matt black polycarbonate type GE/PC500 reinforced with fibre glass.

Lens - Made of specially strengthened shock material lexan.

Metal parts - All vital metal parts are made of stainless steel type AISI 316

Cable - Neoprene 3-core, 1.5m length.

Lampholder - type P28S

Bulbs

220V - 65W - 60cd

110V - 60W - 60cd

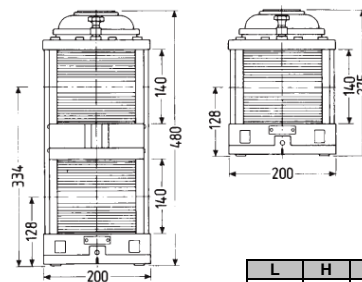
24V - 40W - 60cd

Voltage to be specified when ordering

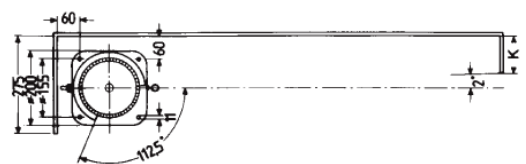
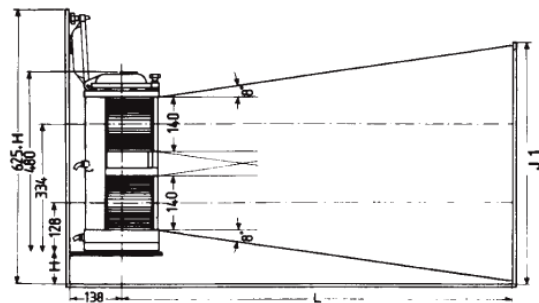
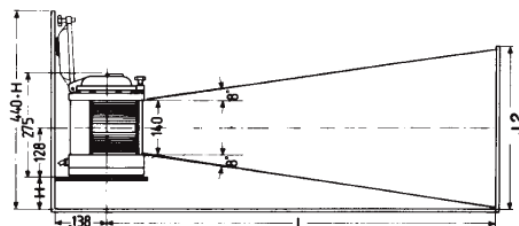
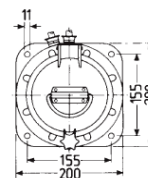
Maintenance - All parts are made of non-corrosive materials and do not require any special protective care. These parts can be supplied as back-up spares for on board servicing.



Manufacturers of Commercial, Industrial & Special Purpose Light Fittings



L	H	K	J1	J2
460	0	122	470	270
500	6	121	480	280
600	20	118	510	310
700	34	113	540	340
800	48	109	565	365
910	63	105	600	400



Double Tier

Hoistable

Single Tier

Navigation lights DHR70 Double Tier				
SECTIONAL	order no.	horiz. sector	visibility	colour
Starboard	SB21	112.5	3 n.m.	green
Port	BB22	112.5	3 n.m.	red
Masthead	T23	225	6 n.m.	white
Stern	H24	135	3 n.m.	white
Towing	SL25	135	3 n.m.	yellow
ALL ROUND	order no.	horiz. sector	visibility	colour
White	RWT26	360	3 n.m.	white
Red	RRD27	360	3 n.m.	red
Green	RGR28	360	3 n.m.	green
Green / Red	RGR18/RRD17	360	3 n.m.	green/red
Red / Green	RRD17/RGR18	360	3 n.m.	red/green
Navigation lights DHR70 Single Tier				
SECTIONAL	order no.	horiz. sector	visibility	colour
Starboard	SB11	112.5	3 n.m.	green
Port	BB12	112.5	3 n.m.	red
Masthead	T13	225	6 n.m.	white
Stern	H14	135	3 n.m.	white
Towing	SL15	135	3 n.m.	yellow
Elbe	H14	135	3 n.m.	white
Suez	H14R	135	3 n.m.	red
ALL ROUND	order no.	horiz. sector	visibility	colour
White	RWT16	360	3 n.m.	white
Red	RRD17	360	3 n.m.	red
Green	RGR18	360	3 n.m.	green
Yellow	RGL19	360	3 n.m.	yellow
Morse/Manoeuvring	RWT16	360	5 n.m.	white
ALL ROUND HOISTABLE	order no.	horiz. sector	visibility	colour
White	RWT16H	360	3 n.m.	white
Red	RRD17H	360	3 n.m.	red
Green	RGR18H	360	3 n.m.	green

Technical

Do not carry out high voltage circuit tests with these luminaires. Always replace lamps before cycling occurs at end of life to avoid damage or injury due to lamp rectification. For any advice regarding the technical aspects of these products please consult our technical department.

All information, recommendation, or advice contained in this document or given by Sondia Lighting, or any of its subsidiaries, affiliates, or authorised representatives, whether written or oral, is given in good faith, to the best of its knowledge, and based on current procedures in effect. The products of Sondia Lighting, or if applicable, of its subsidiaries or affiliates are sold subject to General Conditions of Sale which are available upon request. Nothing in this or any other document shall alter, vary or supersede, or operate to waive any of the General Conditions of Sale. Each user of the products shall convince themselves, through all available sources (including finished product testing in its appropriate environment) of the suitability of the products supplied for its own particular purpose. Because actual use of the products by the user is beyond the control of Sondia Lighting, its subsidiaries and affiliates, such use is within the exclusive responsibility of the user. Sondia Lighting, its subsidiaries and affiliates cannot be held responsible for any loss incurred through incorrect or faulty use of the products. Information, recommendation and / or advice are neither made to infringe on any patents, nor to grant a license under any patent or intellectual property right of Sondia Lighting or any of its subsidiaries or affiliated companies, nor to grant the right to file for any patent protection. We have a policy of continuous technical development and products and / or descriptions, and / or materials may be changed without prior public announcement or warning.