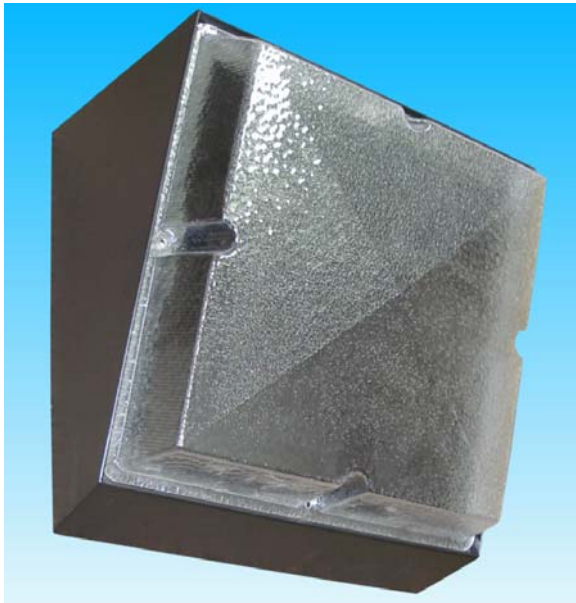
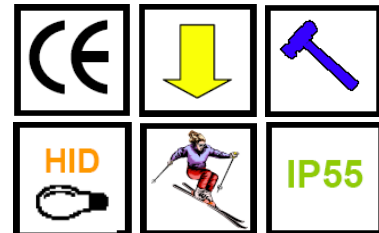


WALLPACK ANGLED

Polycarbonate Wall Pack Range



Manufacturers of Commercial, Industrial
& Special Purpose Light Fittings



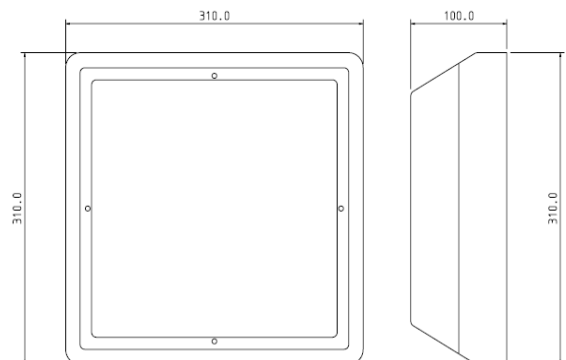
Attributes

- Polycarbonate body
- High Frequency Electronic gear
- Removable Steel Gear tray
- Easy lamp replacement
- Good sideways distribution to maximise spacing
- Excellent Photometric performance

Description

A compact fluorescent range of decorative luminaires designed for environments such as Hospitals, schools, Prisons and care units. The luminaire is constructed from UV stabilised polycarbonate and a mild steel powder coated gear tray. Ideal for corridors, stairways, receptions areas, toilets and bathrooms. Fitting comes standard with security screws.

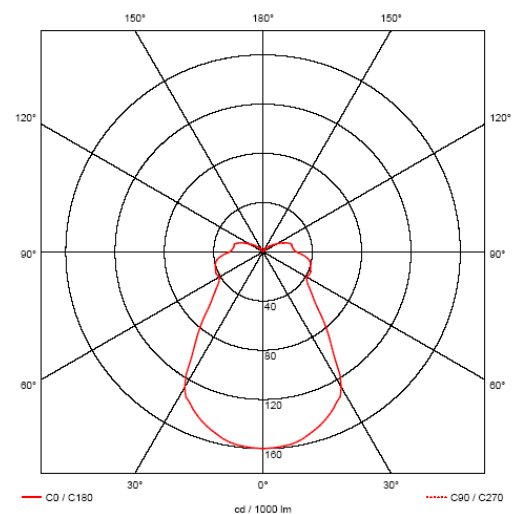
Dimensions



Specification

LAMP TYPE	CATALOGUE NUMBER	WEIGHT (KG)
16w 2D	SQPCK-POLY-162D	3.8
28w 2D	SQPCK-POLY-282D	3.8
38w 2D	SQPCK-POLY-382D	3.8
OPTIONS		
3hr maintained emergency	.EM	1.1
Self-test emergency gear	.ST	

Photometrics



Technical

This range is suitable for normal operation from a 230V 50Hz supply. Other options are available. Do not carry out high voltage circuit tests with these luminaires. Always replace discharge lamps before cycling occurs at end of life to avoid damage or injury due to lamp rectification. For any advice regarding the technical aspects of these products please consult our technical department.

All information, recommendation, or advice contained in this document or given by Sondia Lighting, or any of its subsidiaries, affiliates, or authorised representatives, whether written or oral, is given in good faith, to the best of its knowledge, and based on current procedures in effect. The products of Sondia Lighting, or if applicable, of its subsidiaries or affiliates are sold subject to General Conditions of Sale which are available upon request. Nothing in this or any other document shall alter, vary or supersede, or operate to waive any of the General Conditions of Sale. Each user of the products shall convince themselves, through all available sources (including finished product testing in its appropriate environment) of the suitability of the products supplied for its own particular purpose. Because actual use of the products by the user is beyond the control of Sondia Lighting, its subsidiaries and affiliates, such use is within the exclusive responsibility of the user. Sondia Lighting, its subsidiaries and affiliates cannot be held responsible for any loss incurred through incorrect or faulty use of the products. Information, recommendation and / or advice are neither made to infringe on any patents, nor to grant a license under any patent or intellectual property right of Sondia Lighting or any of its subsidiaries or affiliated companies, nor to grant the right to file for any patent protection. We have a policy of continuous technical development and products and / or descriptions, and / or materials may be changed without prior public announcement or warning.