

# SAFFRON



## Surface/Suspended Fluorescent Range

### Attributes

- Low Glare 65 degree louvre
- High Frequency Electronic gear
- Modern Design
- Suspension Option
- Excellent Photometric performance

### Description

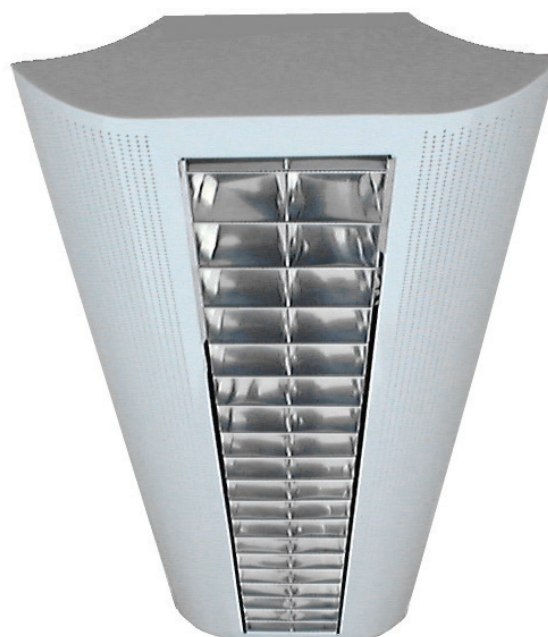
Surface or suspended fluorescent range of very attractive direct/indirect luminaires designed for commercial, hospita, and educational environments. The luminaire uses T5 high efficiency fluorescent tubes with high frequency electronic control gear. The combination of direct louvre controlled light distribution, together with indirect ceiling wash, enables the luminaire to be used in VDU areas. Where the ceiling height allows, the luminaire can be suspended by two matching tubes, which gives better ceiling illuminance. The shallow powder coated mild steel geartray keeps the luminaire depth to an absolute minimum. The luminaires are designed for use in those areas where aesthetic appearance is important and there are various options of lamp available to enable a suitable balance between efficacy and effect to be achieved.

### Specification

Lamp Type	Catalogue Number	Weight (kg)
2 x 28W T5	SAF 228.HF	7.8
2 x 35W T5	SAF 235.HF	8.8
2 x 49W T5	SAF 249.HF	8.8

### Options

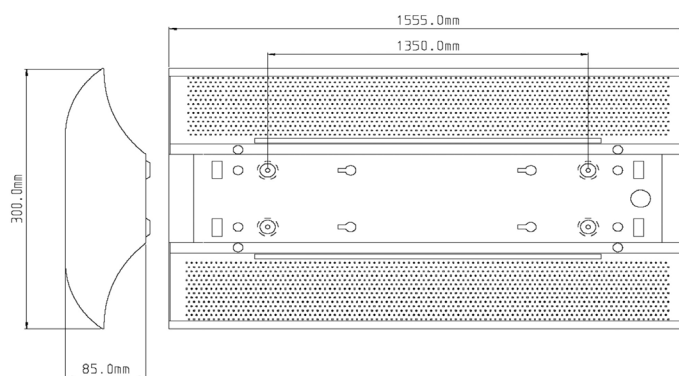
3hr maintained emergency	.EM	1.1
HF electronic switch DIM	.HFSD	0.03
Suspension tubes	.SUS	0.8



### Technical

This range is suitable for normal operation from a 230V 50Hz supply. Other options are available. Do not carry out high voltage circuit tests with these luminaires. Always replace lamps before cycling occurs at end of life to avoid damage or injury due to lamp rectification. For any advice regarding the technical aspects of these products please consult our Technical Department.

### Dimensions



All written or oral information provided by Sondia Lighting or any of its associates is given in good faith based on current knowledge. The products of Sondia Lighting and its associates are sold subject to General Conditions of Sale which are available upon request. No content in this document shall alter, vary, supersede or operate to waive any of the General Conditions of Sale. It is the responsibility of each user to ensure the product supplied is fit for purpose using all available resources, including finished product testing in the appropriate application and environment. Sondia Lighting and its associates cannot be held responsible for any loss incurred through the use of its products. Information, recommendations and/or advice are neither made to infringe on any patents, nor to grant a license under any patent or intellectual property right of Sondia Lighting or its associates, nor to grant the right to file for any patent protection. Sondia Lighting has a policy of continuous technical development and products and/or descriptions, and/or materials may be changed without prior public announcement or warning.

45 Portland Place, Hull, East Yorkshire, HU2 8QP.  
Tel: 01482 223353 Fax: 01482 225681 [www.sondialighting.co.uk](http://www.sondialighting.co.uk)  
Email: [sales@sondialighting.co.uk](mailto:sales@sondialighting.co.uk)

A Division of The Humber Electrical Engineering Company Ltd

