

# ULYSSES T8



## Ceiling T8 Cell Range

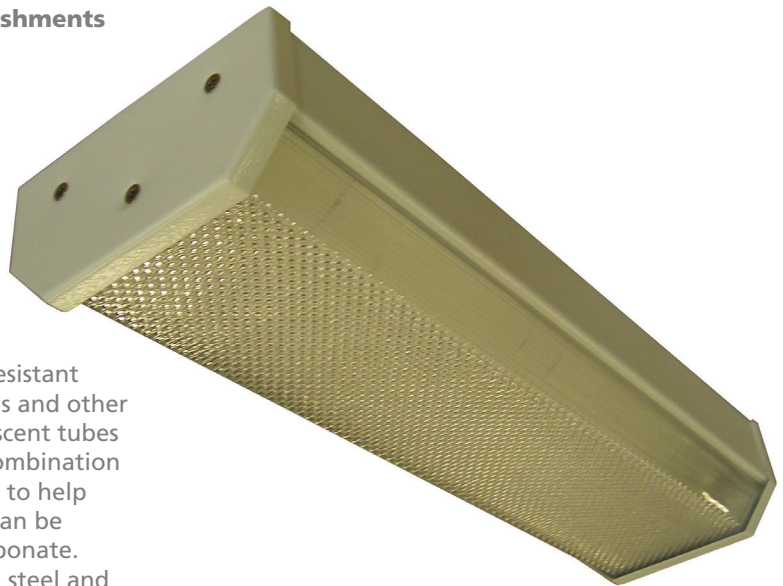
Designed and built for HMP Custodial Establishments

### Attributes

- Slide-in Polycarbonate Controller
- High Frequency Electronic gear
- Secure Anti-Ligature design
- Excellent Photometric performance

### Description

Ceiling mounting T8 fluorescent range of vandal resistant luminaires designed for cell requirements in prisons and other secure environments. The luminaire uses T8 fluorescent tubes with high frequency electronic control gear. The combination of mild steel bodies and endcaps ensure a tight fit, to help reduce the risk of ligature problems. The diffuser can be supplied with opal or prismatic 3mm thick polycarbonate. The geartray is made of white powder coated mild steel and is removable for ease of maintenance. The screws holding the endcaps are stainless steel high security Allen type with central pin as standard. The diffuser slides in from one end to maintain the resistance to attack.



### Specification

Lamp Type	Catalogue Number	Weight (kg)
2 x 18W T8 – 600mm	ULY 218.HF	7.8
3 x 18W T8 – 900mm	ULY 318.HF	9.8
2 x 30W T8 – 900mm	ULY 230.HF	9.8

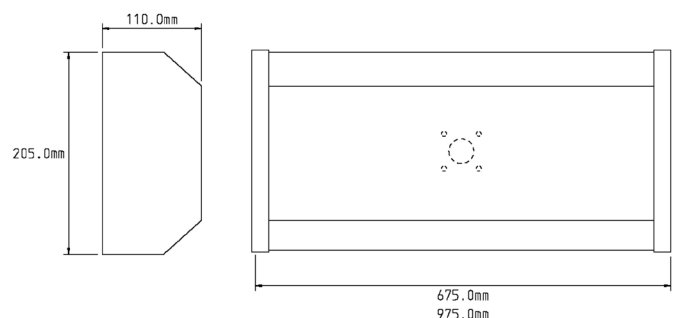
### Options

3hr maintained emergency	.EM	1.1
Night light using 9W TC-S lamp	.NL9	0.4

### Technical

This range is suitable for normal operation from a 230V 50Hz supply. Other options are available. Do not carry out high voltage circuit tests with these luminaires. Always replace lamps before cycling occurs at end of life to avoid damage or injury due to lamp rectification. For any advice regarding the technical aspects of these products please consult our Technical Department.

### Dimensions



All written or oral information provided by Sondia Lighting or any of its associates is given in good faith based on current knowledge. The products of Sondia Lighting and its associates are sold subject to General Conditions of Sale which are available upon request. No content in this document shall alter, vary, supersede or operate to waive any of the General Conditions of Sale. It is the responsibility of each user to ensure the product supplied is fit for purpose using all available resources, including finished product testing in the appropriate application and environment. Sondia Lighting and its associates cannot be held responsible for any loss incurred through the use of its products. Information, recommendations and/or advice are neither made to infringe on any patents, nor to grant a license under any patent or intellectual property right of Sondia Lighting or its associates, nor to grant the right to file for any patent protection. Sondia Lighting has a policy of continuous technical development and products and/or descriptions, and/or materials may be changed without prior public announcement or warning.

45 Portland Place, Hull, East Yorkshire, HU2 8QP.  
Tel: 01482 223353 Fax: 01482 225681 [www.sondialighting.co.uk](http://www.sondialighting.co.uk)  
Email: [sales@sondialighting.co.uk](mailto:sales@sondialighting.co.uk)

A Division of The Humber Electrical Engineering Company Ltd

